

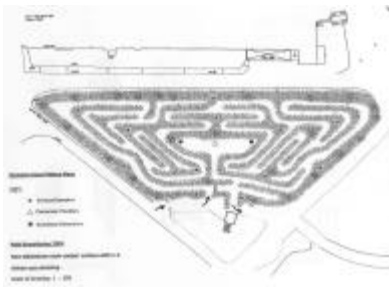
APRIL 2005

We are delighted to send you our first Newsheet of 2005 to keep you up to date on new activities and projects from the Artpoint team.

Featured in this newsletter are projects coming up in the Spring and Summer as well as our tenth anniversary book, *Re Views, Artists and Public Space*, which is published by Black Dog in June. This year we are pleased to be participating in *Evolving City*, a year long programme of cultural activities throughout the city led by Oxford Inspires. As part of the *Oxford 2015* theme Artpoint has curated three temporary projects: *Routes*, *The Centre of the Universe*, and *O – Maps*. We will also be contributing to the exhibition *Oxford 2015, Dreams, Plans, Visions* at Modern Art Oxford from 9 – 19 June. Also coming up are the realization of two other major contemporary public art projects, new commissions by Greyworld at Hampton Court Maze and by Simon Patterson at the Open University in Milton Keynes.

Over the past three months we have been working with Arts Council England, South East on developing a continuing professional development programme for regional local authorities. Two pilot projects will take place and be evaluated this year with an aim to extend this further in 2006 and 2007. Also in development are two research projects, one looking at the relationship between public art and planning and the other, a continued collaboration with the Open University, researching audience perceptions of public art.

Pauline Heffernan, our Office Manager left in February to pursue a career in design. Our new Administrator, Laura Dennis takes up the post in early April.



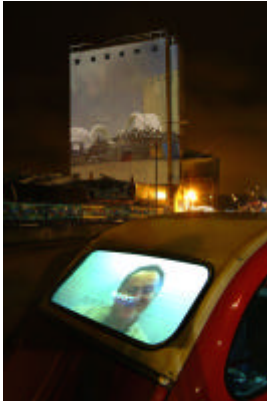
GREYWORLD AT HAMPTON COURT MAZE

The Historic Royal Palaces, working with Artpoint, have commissioned artists Greyworld to create a permanent installation for the famous historic Maze at Hampton Court. The commission will form part of a wider project to transform the experience of the Maze, which will include improvement of its infrastructure and planting and the redesign of its entrance. Greyworld is creating a gentle soundwork for the Maze that draws on its history and the nostalgic idea of furtive conversation and flirtation. As visitors pass through the many green corridors of the maze, they will be tempted to follow the gentle call of birdsong, the seductive rustling of silk or the tantalising sound of delicate laughter as it disappears around a corner into a dead-end. The work is open to the public from 6 May.



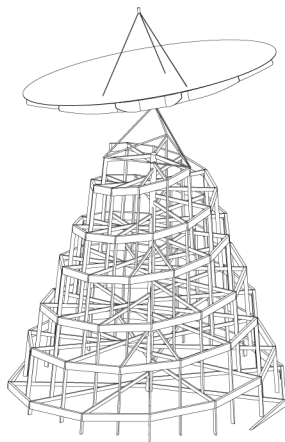
RE VIEWS, Artists and Public Space

To celebrate our 10th Birthday we are launching *Re Views, Artists and Public Space* in association with Black Dog Publishing. *Re Views* focuses on artists' experiences of creating work for public spaces through 10 key projects. Each project is accompanied by text by the artist and an essay examining wider issues around artists' roles in reflecting and creating public space. Projects featured include work by artists Simon Patterson, Jacqui Poncelet, Alison Turnbull and John Kippin and commentaries from Edward Allington, Richard Layzell, Roger Deakin, Sián Ede and Michael Stanley and a Foreword by Sir Christopher Frayling. *Re Views* is available from June 2005 from Black Dog Publishing – www.bdpworld.com at a cost of £19.95, there will also be a set of 10 specially commissioned limited edition prints available from the 10 featured artists through Artpoint – www.artpointtrust.org.uk



ROUTES – MICHAEL PINSKY

Artist Michael Pinsky has been appointed to create a temporary artwork, which will take place from 3 - 17 June 2005 on a Park and Ride bus or bus route as part of the *Oxford 2015* strand of *Evolving City*. The transport system has a rhythm all of its own and the bus routes act as the arteries for the city, bringing thousands of people into the centre, and out again at the end of each day. *Routes* will explore Oxford's Park and Ride community, enlighten and entertain passengers through new cultural experiences, and ask people to look anew at the city around them. During the lead up to the work the artist will undertake a two month research residency on the bus, observing and recording the Park and Ride and its passengers. Artpoint has developed this project in partnership with the Oxford Bus Company. It is supported by Arts & Business.



THE CENTRE OF THE UNIVERSE - JEM FINER

A newly commissioned installation by the highly regarded artist Jem Finer, *The Centre of the Universe*, will take the form of a large-scale spiral tower supporting a radio dish. It is both a sculptural object in the landscape and a working radio telescope tuned to 1420 Mhz, the frequency used by astrophysicists to chart the structure and vastness of the universe. The work takes its title from the artist's understanding that, regardless as to whether the universe is finite or infinite, it has no central point, together with the notion that all individuals perceive the universe as existing around them. The installation is, in fact, an observatory, and it is this idea of observation that Jem Finer sees as integral to both the practice of the artist and the scientist. The project will take place at Oxford University Parks from 4 June to 17 June. It is free to the public and is open from dawn till dusk.

O – MAPS – JEM FINER

Jem Finer is also in the process of assembling a collection of maps of the universe and Oxford drawn by people from a variety of backgrounds and disciplines including astrophysicists, school children, art students and Oxfordians. The project explores the extremes of size and scale that exist in the universe and will be shown as part of the *Oxford 2015* exhibition at Modern Art Oxford from 9 – 19 June.



GORT, KLAATU BARADA NIKTO – SIMON PATTERSON

A new public art work by artist Simon Patterson, curated by Artpoint and commissioned by The Open University for their new Chemistry and Planetary Sciences Department designed by architects Ridge and Partners. The scientists are engaged in an adventurous project of sending a probe, as part of the NASA Cassini spacecraft, on a seven year, 2 billion mile journey to Saturn's moon, Titan. Simon's commission, a series of aircraft runway lights leading to the entrance of the building, is wry and paradoxical, countering the serious work going on inside the building and somewhere out there in space. Its title draws on sci-fi movies - *Gort, Klaatu barada nikto* is a line from the 1951 movie, *The Day the Earth Stood Still*.